



Keeping the McDonald Candle Lit

Scott Rosenthal, PE,
MT Tech Associate Professor

Sonya Rosenthal, PE
MT Tech Adjunct Professor

May 11, 2017

Acknowledgments



Past discussions from speakers:





Disclaimer

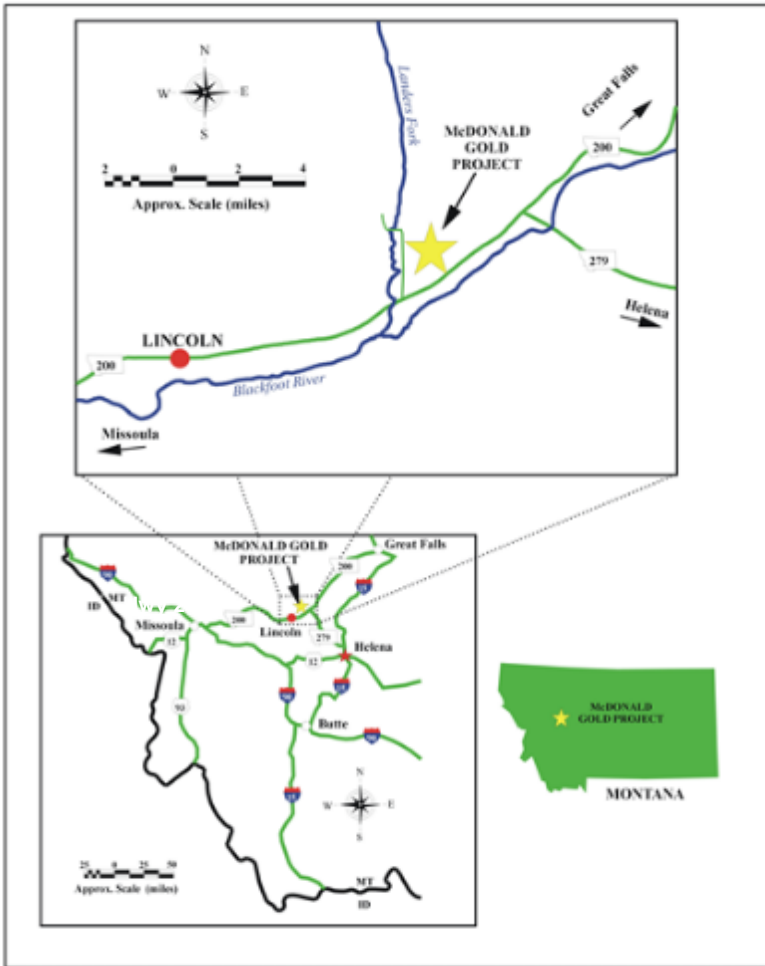
All information in this presentation is just information.

Make decisions, judgments, investments, actions based on your own interpretation.

You are responsible for your revised approach and new thinking with this project.

We're engineers, not lawyers or geologists, but you get the point....

Where is McDonald?



What is a 'McDonald?' (i.e. Background)

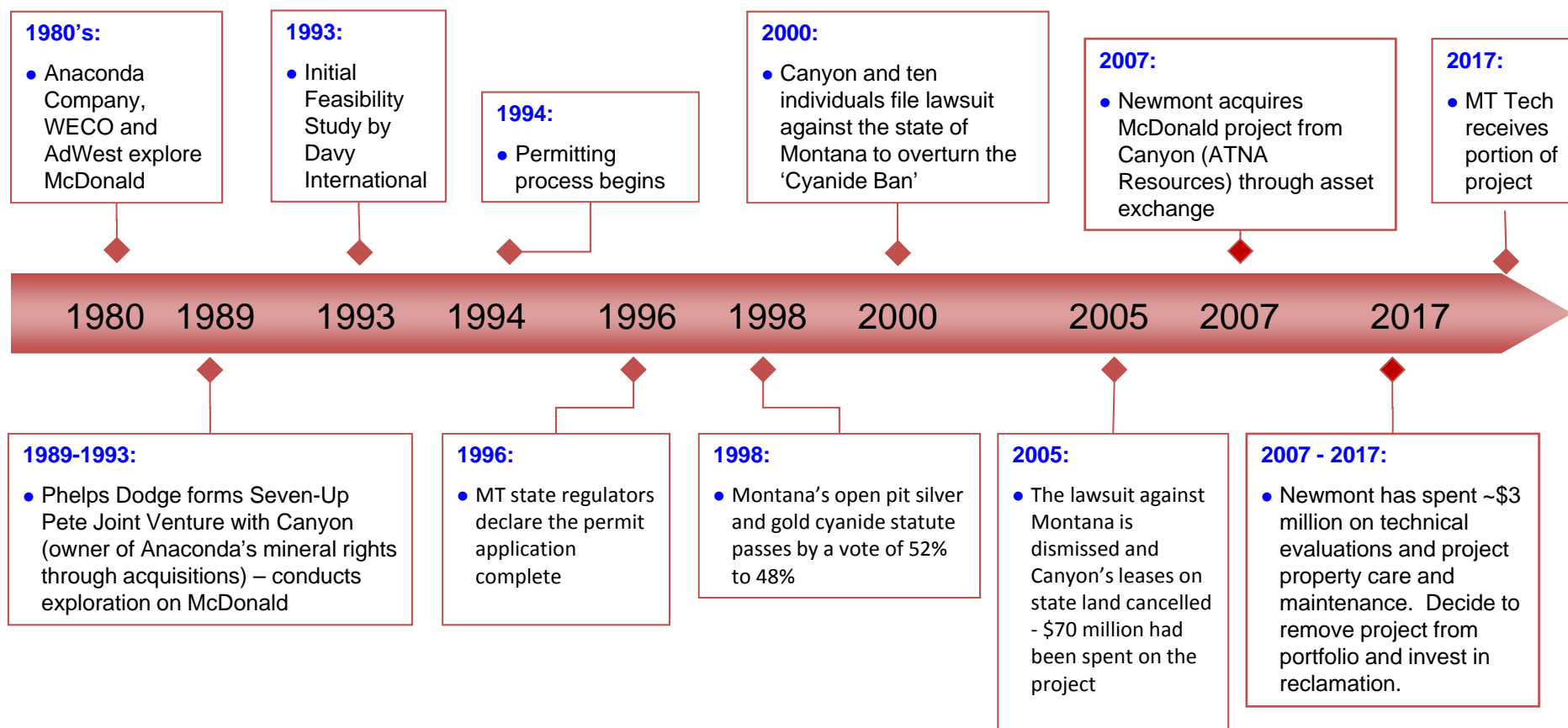


**Silver-Gold Exploration Project, 7 miles west of
Lincoln, Montana**





McDonald Project History



Geologic Reviews





Newmont Liability Reduction Plan

- **2012, developed underground model. Resource too small for Newmont.**
- **2012-2015, not successful in divesting project.**
- **2015, plan to reduce liability on project**
 - Sieben Ranch
 - Other private land owners
 - DEQ
 - NDRC
 - Mt Tech

2016+ Reclamation by Newmont



- **Project assets on Sieben Ranch**
 - Plug and abandon piezometers and water wells
 - Reclaim drill pads and exploration roads
- **Exploration Samples**
 - Dispose of reverse circulation samples
- **Transferred to MT Tech School of Mines**
 - All core
 - Chip boards
 - Project documentation



Why MT Tech School of Mines????

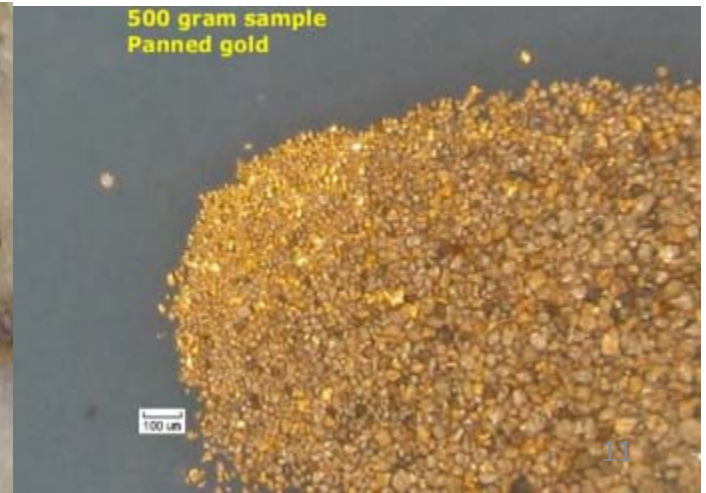
Is it the gold?

Is it the silver?

Is it a research opportunity?

Is it an education opportunity for many disciplines?

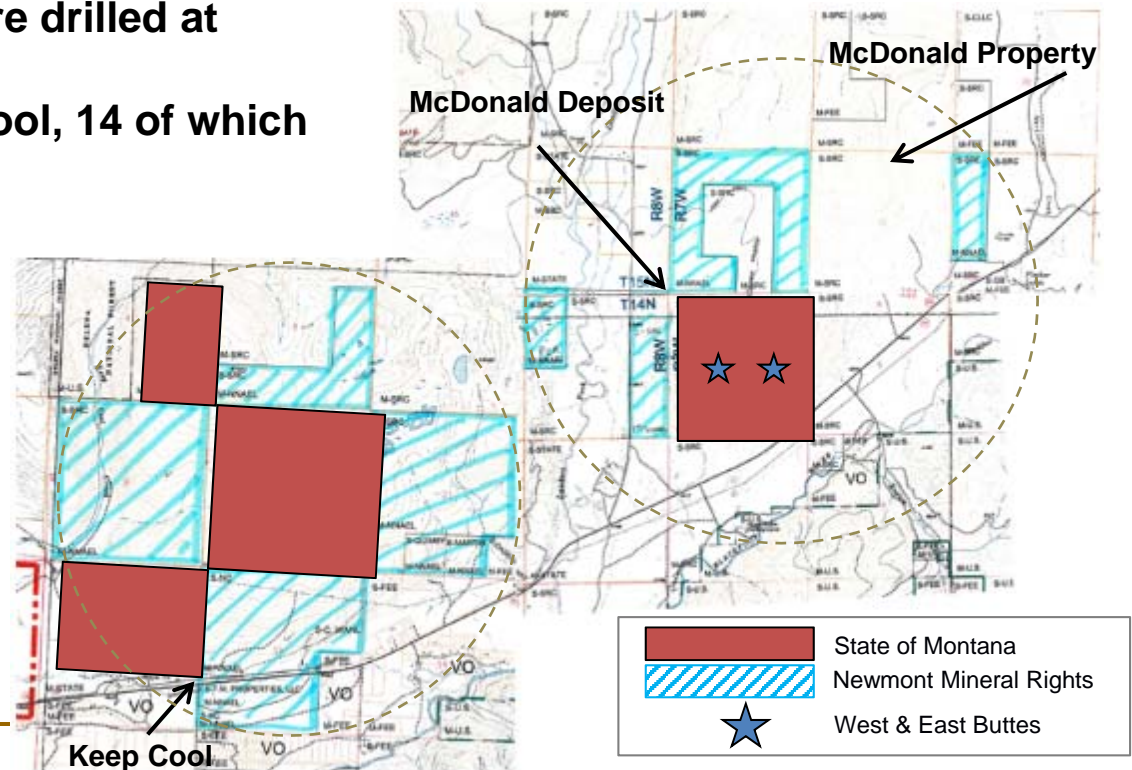
Is it based on MT School of Mines being identified as the recipient of the proceeds from this State Land Section?





Historical Project Exploration

- The site has been extensively drilled, with 600+ holes
 - Majority was reverse-circulation drilling focused on bulk-tonnage, OP mine development
 - 46 diamond drill holes were drilled at McDonald
 - 40 holes drilled at Keep Cool, 14 of which were diamond drill holes



Project Assets

- Site has ~5 miles of access roads, ~30 pads supporting wells and dewatering data provided by 165 (and being reduced) monitoring wells
- Heated core storage facility is located nearby
 - >500,000 total feet of drilling
 - >34,000 feet of HQ and PQ core (63.5 and 85mm)



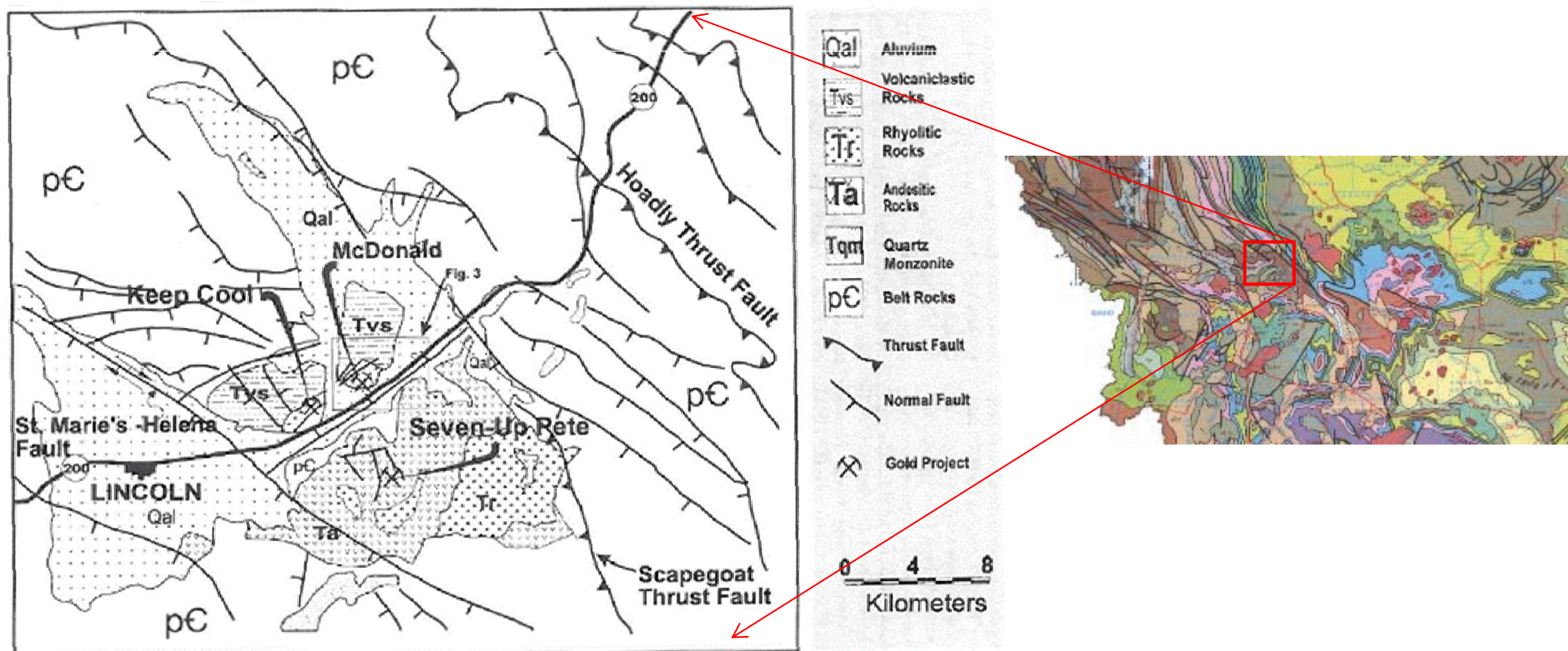
Monitoring well



Heated core storage facility along Hwy 200

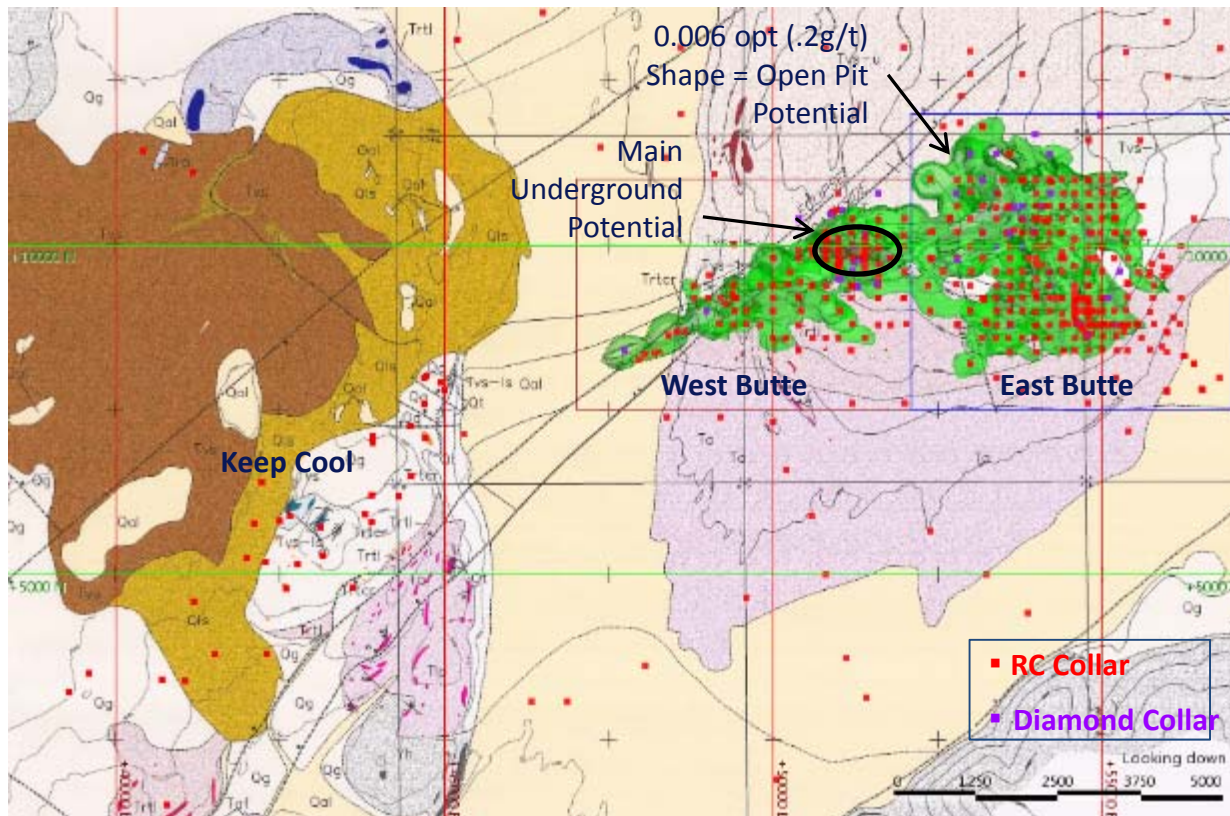


Western Montana Regional Geology



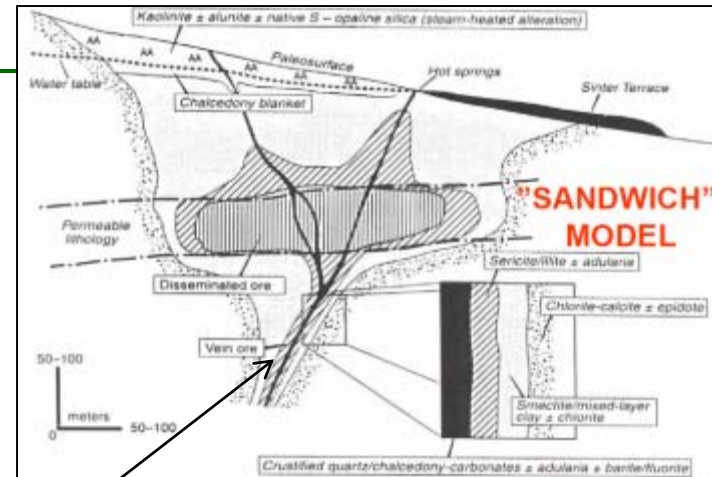
McDonald & Keep Cool

- Refer to *"The geology of the McDonald Gold Deposit, Lewis and Clark County, Montana"*, Bartlett, Mark W.; Enders, M. Stephen; Volberding, John E.; and Wilkinson, William H. Geological Society of Nevada, 1996



Geologic Model

- Quartz Vein-hosted, High-grade, Low-sulfidation System



LS Epithermal models, both showing alteration and vein zonation; Round Mtn (above) shows preferential mineralization in "permeable lithology", McDonald (below), is similar

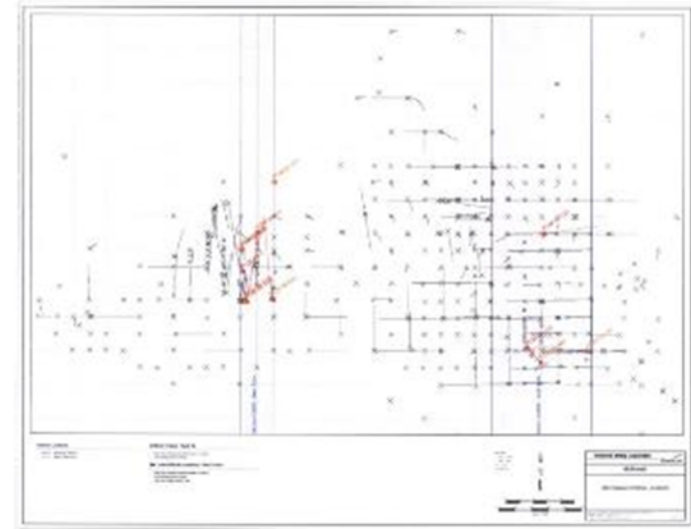


Metallurgy Development History



Previously Viewed as a Large, Low-grade, Open Pit Project

- Prior owners focused on a large, low-grade deposit (~ 1 g Au/t)
- Cyanide heap leach prospect with 75% recovery



Newmont research

- Potential for ammonium thiosulfate heap leach
- Potential for gravity gold recovery when coarse free gold was noted in samples



Economics Change with Time/Owner



Large, Low-grade, Disseminated Au+Ag Open Pit

- Phelps Dodge, and others, approached the deposit as a large, disseminated deposit
- Open pit scenario considered bulk mining:
10.9 Moz Au @ 0.5g/t
63.7 Moz Ag @ 3.0g/t



Round Mountain, NV Open Pit: massive, low-grade (0.017opt Au) volcanic-hosted disseminated gold deposit has produced >10Moz in last 20 yrs

High-grade Underground

- Based on core reviews, Newmont noted steeply-dipping, 1-5m wide, high-grade Au/Ag mineralization is associated with swarms of 1mm-10cm wide low-sulfidation quartz vein stockwork and vein/breccias
- Mapping of ENE to NW silica sinter at surface suggests high level of system preservation and potential for ~300m vertical extent & feeder zones

→ Low-impact UG mining scenario



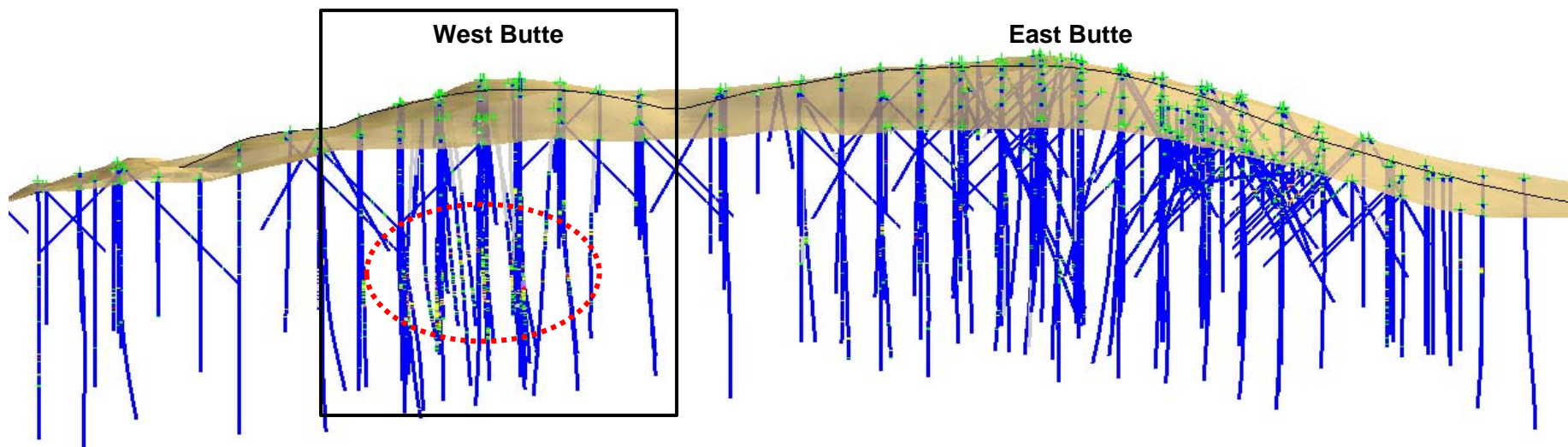
Graphic representation of similar, but smaller, LS veins and stockwork containing abundant coarse Au at McD (McD cores superimposed on Midas, NV, Colorado Grande LS vein ore face)

McDonald Underground Development



Option at West Butte is Attractive

- Narrow, high-grade Au/Ag mineralization associated with quartz veins/breccias at West Butte likely constitutes an underground mining opportunity
- High grade targets in substantially drilled-out West Butte area tested by Echo Bay due diligence core drilling prompted restricted-grade shell & block model (>0.10opt) and conceptual underground study
- A low-capex, quick access, low-impact decline and UG-mining scenario was tested at various cutoff grades for West Butte

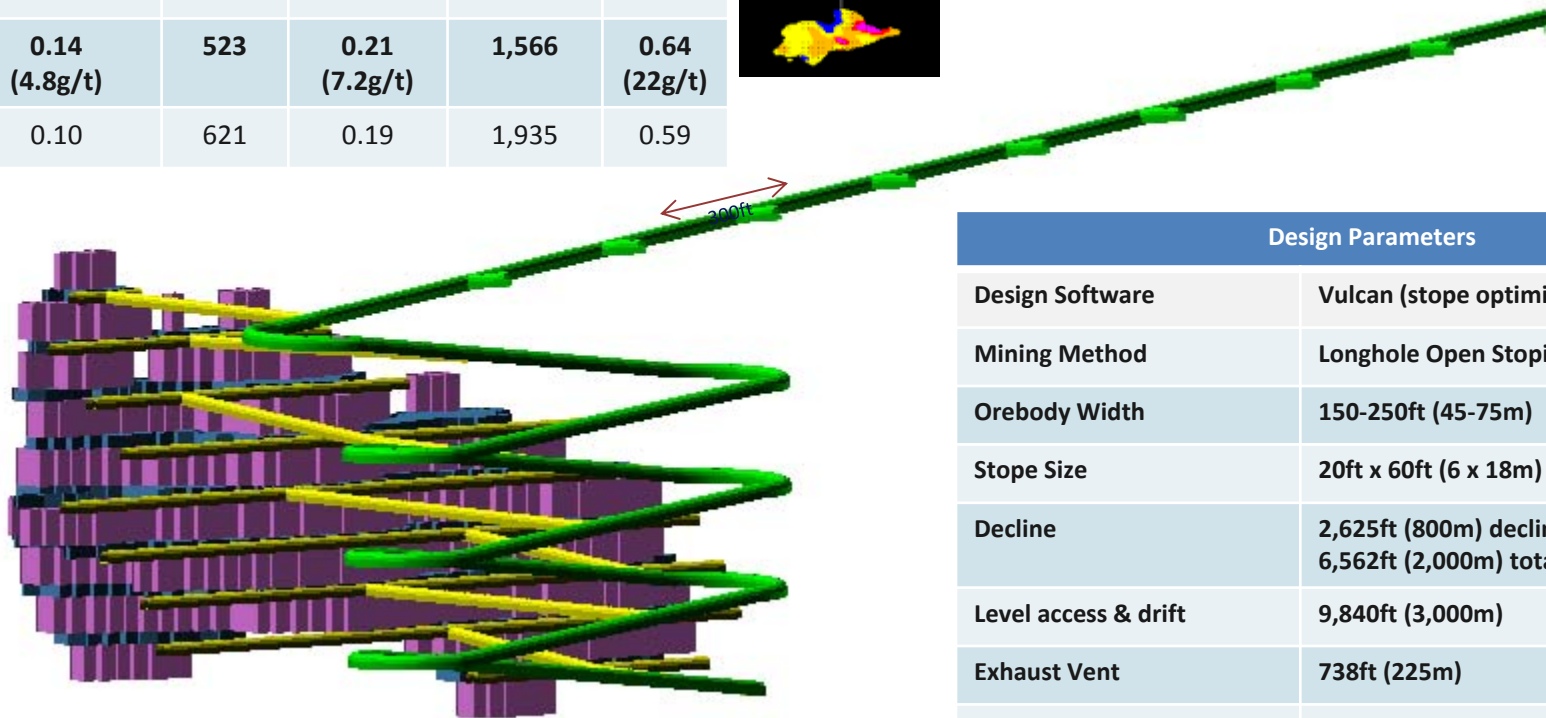
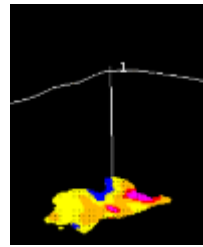




West Butte: UG Mine Potential

- Preliminary analysis indicates mineral resource of ~500K Au

Potential Mineral Inventory of Mineable Shapes				
Cutoff Grade (opt)	Au (K oz)	Au (opt)	Ag (K oz)	Ag (opt)
0.20	305	0.26	857	0.74
0.14 (4.8g/t)	523	0.21 (7.2g/t)	1,566	0.64 (22g/t)
0.10	621	0.19	1,935	0.59

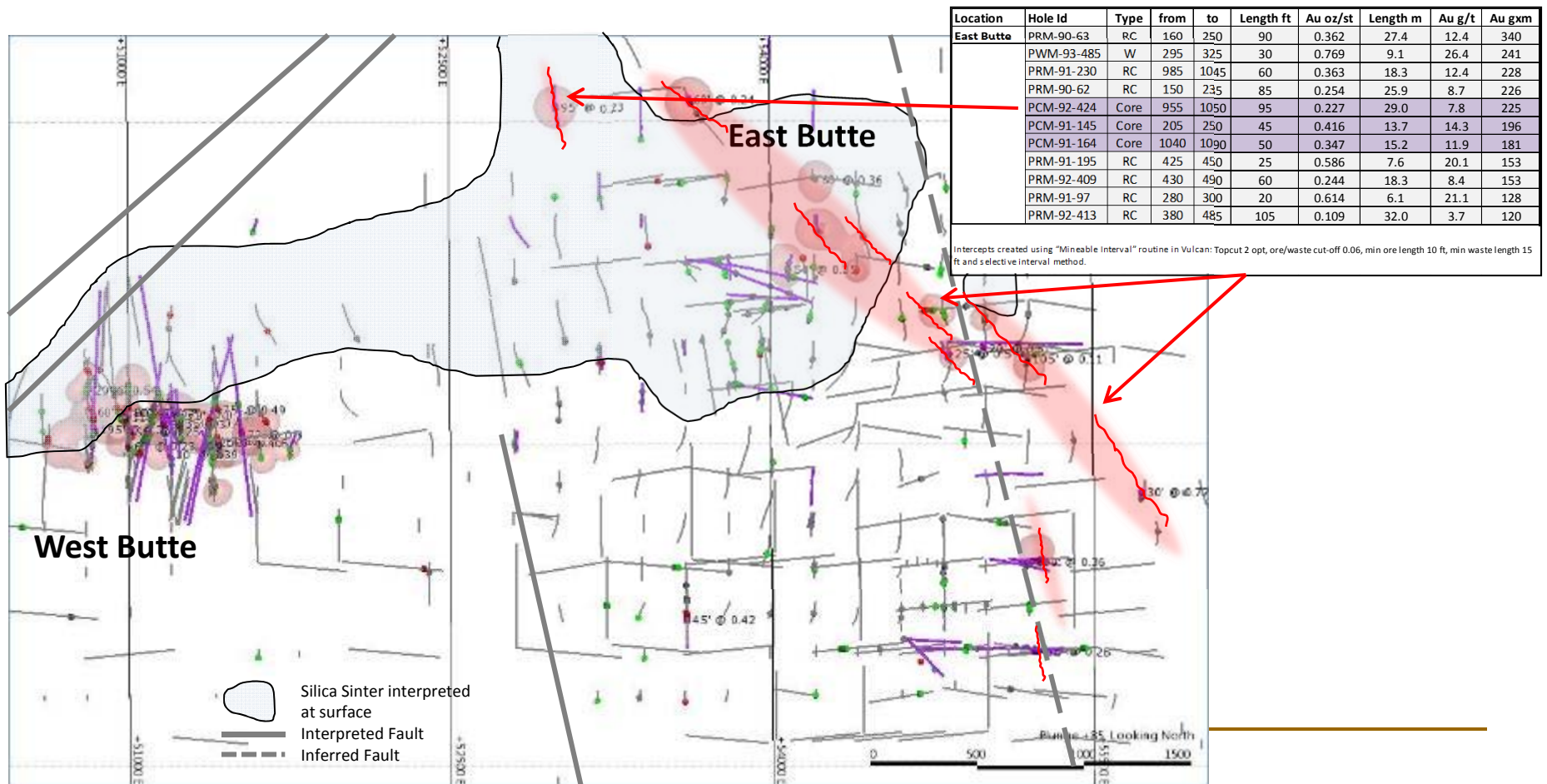


Design Parameters	
Design Software	Vulcan (stope optimizer)
Mining Method	Longhole Open Stopping
Orebody Width	150-250ft (45-75m)
Stope Size	20ft x 60ft (6 x 18m)
Decline	2,625ft (800m) decline to ore - 6,562ft (2,000m) total
Level access & drift	9,840ft (3,000m)
Exhaust Vent	738ft (225m)
Dilution	10%



East Butte: Excellent UG Exploration Potential

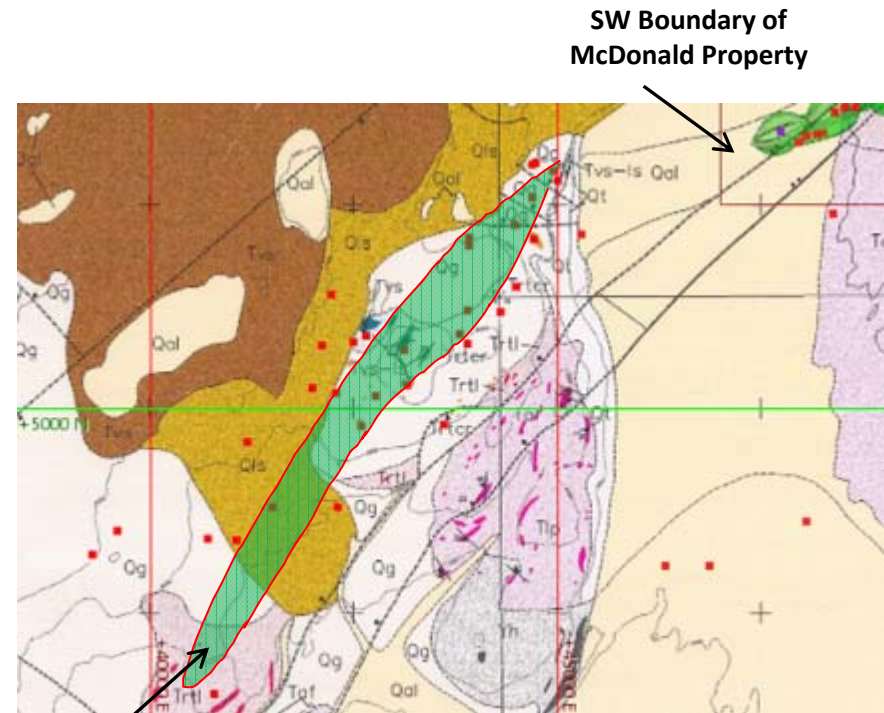
- Exploration target at East Butte could prove larger than West Butte, once drilled out





Keep Cool: Nearby Exploration Opportunity

- Keep Cool was explored through 40 drill holes, trenching, soil geochemistry and IP/resistivity surveys for a total of 15.2 line miles
- Project area located on the west side of Lander's Fork, one mile from the potential West Butte portal location
- Covers 2,040 acres of mineral rights with various surface owners
- Due to geologic similarities with McDonald, Keep Cool is an attractive exploration opportunity requiring similar UG analysis
- Angled core drilling between 200m and 400m total depth is needed to target and identify high-grade structures in this system



Keep Cool Mineral Trend

Location	Hole Id	Type	from	to	Length ft	Au oz/st	Length m	Au g/t	Au gxm
Keep Cool	PDKC-91-007	?	465	475	10	0.078	3.0	2.7	8
	PDKC 91 020	?	45	55	10	0.087	3.0	3.0	9
	PDKC-91-020	?	805	820	15	0.118	4.6	4.0	18
	PDKC-91-020	?	840	855	15	0.183	4.6	6.3	29
	PDKC-91-020	?	940	950	10	0.085	3.0	2.9	9
	PDKC-91-021	?	950	980	30	0.149	9.1	5.1	47
	PDKC 91 021	?	1030	1040	10	0.064	3.0	2.2	7

MT Tech Strategy



2017:

- 1. Have acquired 228 boxes of maps, papers, logs, etc.
Plan to scan, digitize, make more usable by others**
- 2. Newmont's desire to relocate core
Mt Tech has to find a home for lots of core**

Longer Term:

- Have the data...**
- Research opportunities in Geological Engineering, Mining Engineering, Hydro-Geology, etc.**
- Partner with Industry?**

YOUR EXPECTED ROLE



- Support research, partnering, and investments with next steps of this project.
- What else can you offer to strengthen education and programs at MT Tech through McDonald Project?

Potential High-grade Au+Ag Asset with Exploration Opportunities



Mineral Rights in the Neighborhood

- Multiple deposits and exploration targets identified

McDonald Project: Significant Resource Data & Assets

- 600+ logged and assayed drill holes
- High grade Au and Ag resources identified
- Over \$80M spent on the project to date by previous owners
- Access roads maintained, includes monitoring wells
- Heated core storage facility located nearby (short or long term?)

Encouraging Underground Potential

- West Butte = underground potential, previously extensively drilled
- West Butte UG potentially contains 500koz Au at 7.2 g/t grade
- East Butte has underground potential.
- Further potential in the vicinity???



Be a part of the Solution!

Contact those below to inquire about your role with McDonald Project:

Sonya Rosenthal, PE
MT Tech, School of Mines
(406) 565-1985
srosenthal1@mtech.edu

Scott Rosenthal, PE
MT Tech, School of Mines
(406) 496-4867
srosenthal@mtech.edu

