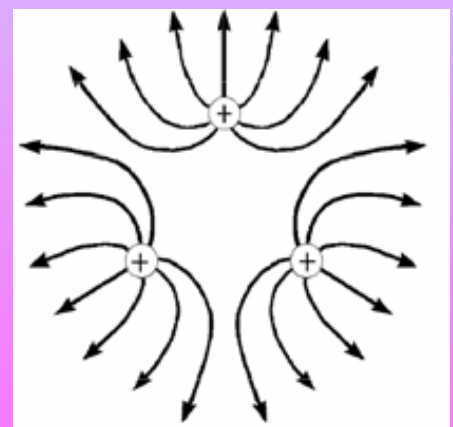
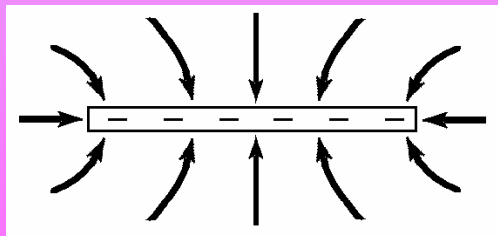
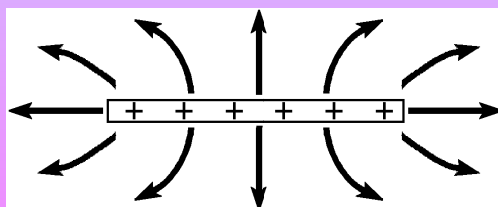
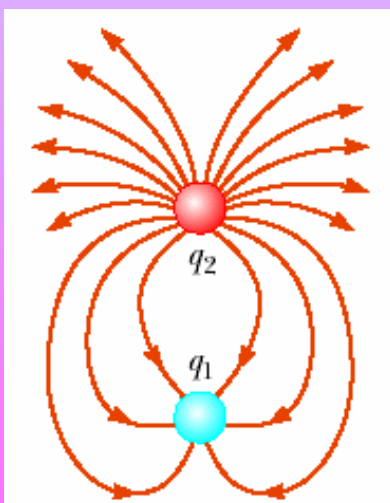
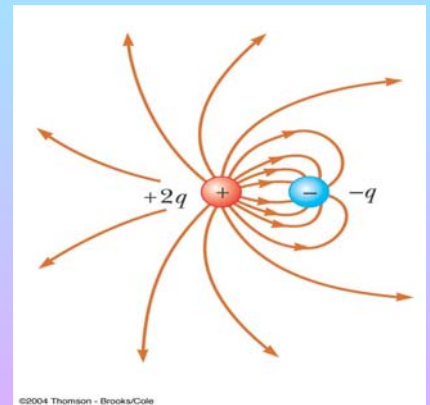
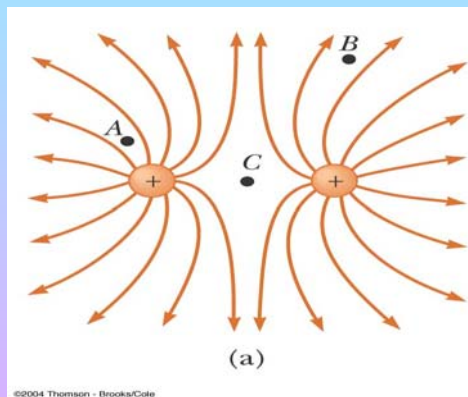
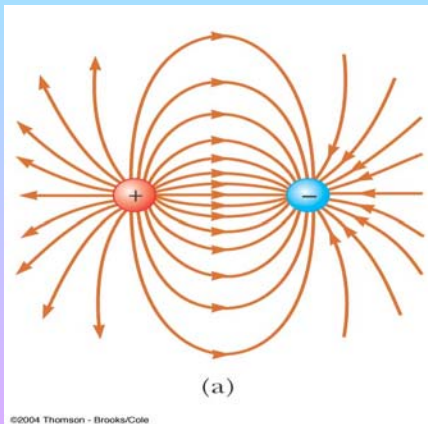
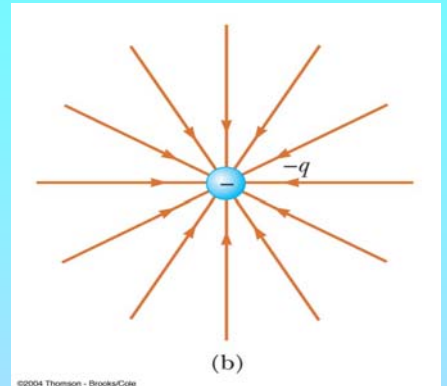
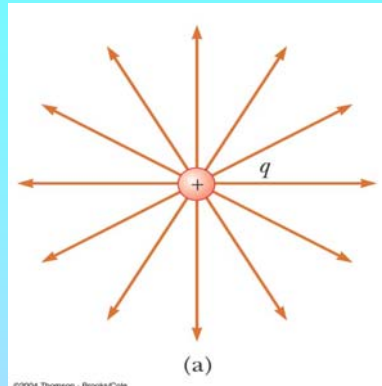
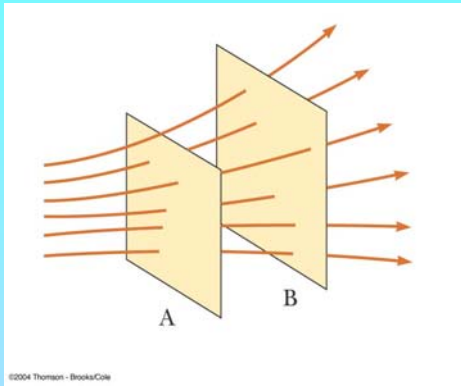


Electric Field Lines (examples)



The Cathode Ray Tube (CRT)

- A CRT is commonly used to obtain a visual display of electronic information in oscilloscopes, radar systems, televisions, etc.
- The CRT is a vacuum tube in which a beam of electrons is accelerated and deflected under the influence of electric or magnetic fields
- The electrons are deflected in various directions by two sets of plates
- The placing of charge on the plates creates the electric field between the plates and allows the beam to be steered

